



Current Data Parameters

NAME MaoRuiYiHuangTongGan-1H NMR C5D5N
EXPNO 1
PROCNO 1

F2 - Acquisition Parameters

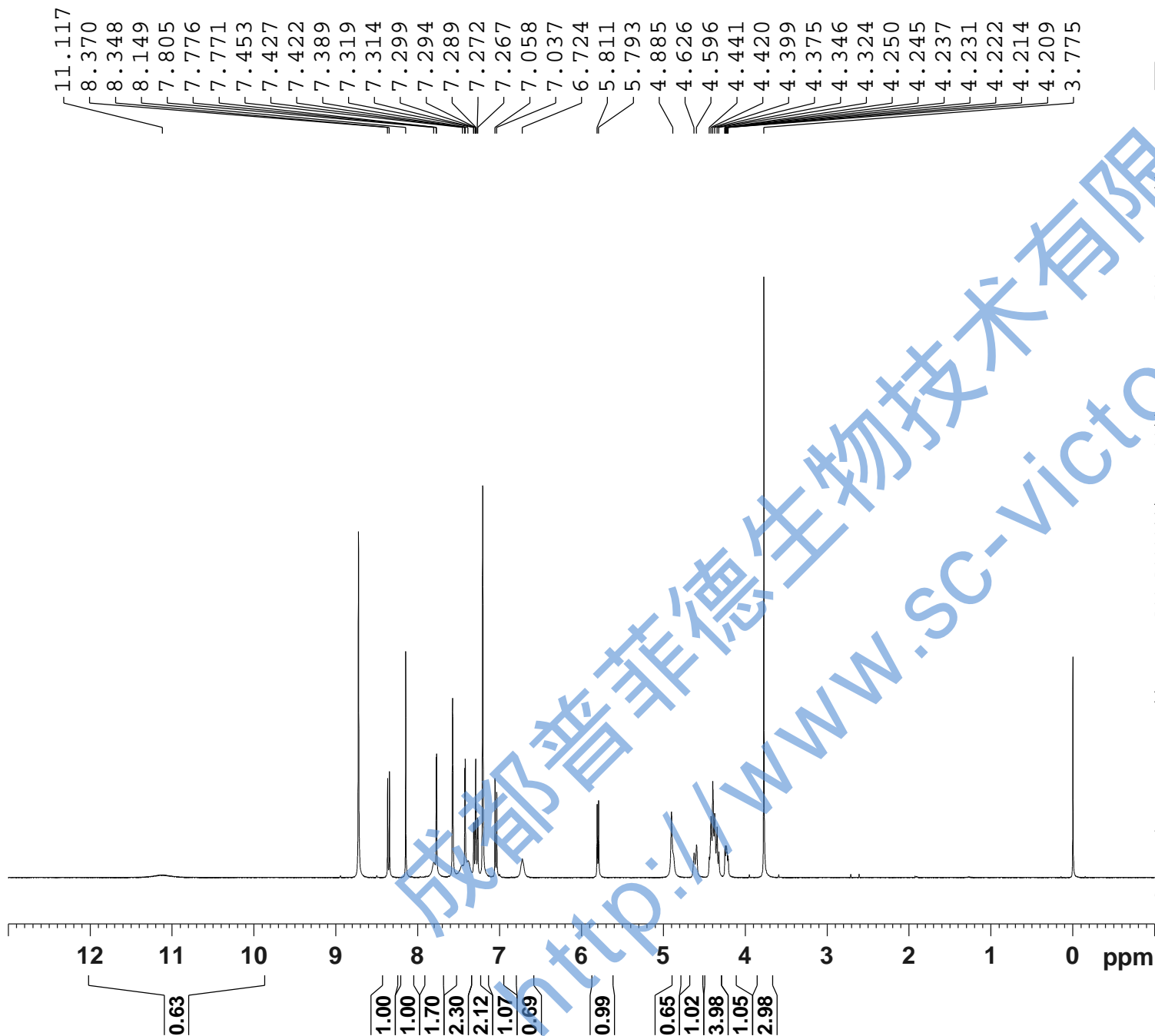
Date_ 20171223
Time 22.44
INSTRUM spect
PROBHD 5 mm PABBO BB/
PULPROG zg30
TD 65536
SOLVENT Pyr
NS 16
DS 2
SWH 8012.820 Hz
FIDRES 0.122266 Hz
AQ 4.0894465 sec
RG 116.95
DW 62.400 usec
DE 6.50 usec
TE 301.2 K
D1 1.0000000 sec
TD0 1

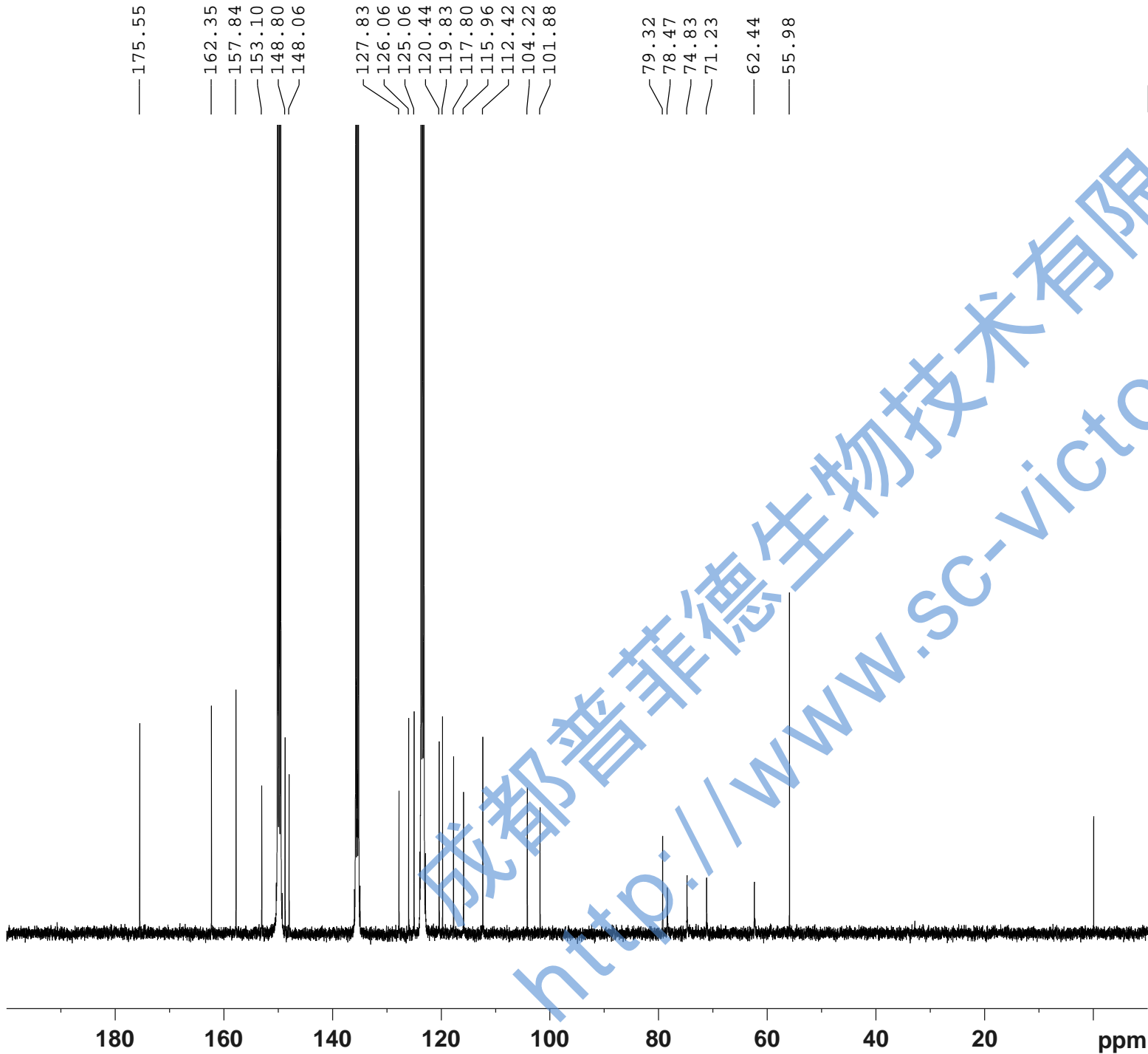
==== CHANNEL f1 =====

SFO1 400.1324710 MHz
NUC1 1H
P1 14.79 usec
PLW1 11.50800037 W

F2 - Processing parameters

SI 65536
SF 400.1299911 MHz
WDW EM
SSB 0
LB 0.30 Hz
GB 0
PC 1.00
SR -8.86 Hz





—175.55
—162.35
—157.84
—153.10
—148.80
—148.06
—127.83
—126.06
—125.06
—120.44
—119.83
—117.80
—115.96
—112.42
—104.22
—101.88

—79.32
—78.47
—74.83
—71.23
—62.44
—55.98

Current Data Parameters
NAME MaoRuiYiHuangTongGan-13C NMR C5D5N
EXPNO 3
PROCNO 1

F2 - Acquisition Parameters
Date_ 20171224
Time 4.24
INSTRUM spect
PROBHD 5 mm PABBO BB/
PULPROG zgig30
TD 65536
SOLVENT Pyr
NS 6000
DS 4
SWH 24038.461 Hz
FIDRES 0.366798 Hz
AQ 1.3631488 sec
RG 202.5
DW 20.800 usec
DE 6.50 usec
TE 301.2 K
D1 2.0000000 sec
D11 0.03000000 sec
TD0 1

=====
CHANNEL f1
SFO1 100.6228298 MHz
NUC1 13C
P1 10.13 usec
PLW1 51.00000000 W

=====
CHANNEL f2
SFO2 400.1316005 MHz
NUC2 1H
CPDPRG[2] waltz16
PCPD2 90.00 usec
PLW2 11.50800037 W
PLW12 0.31077999 W

F2 - Processing parameters
SI 262144
SF 100.6127428 MHz
WDW EM
SSB 0
LB 1.00 Hz
GB 0
PC 1.40
SR -26.24 Hz

成都普菲德生物技术有限公司
http://www.sc-victor.com